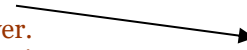


Easy Stack Panel Line

The new *Easy Stack* panels simplify installation

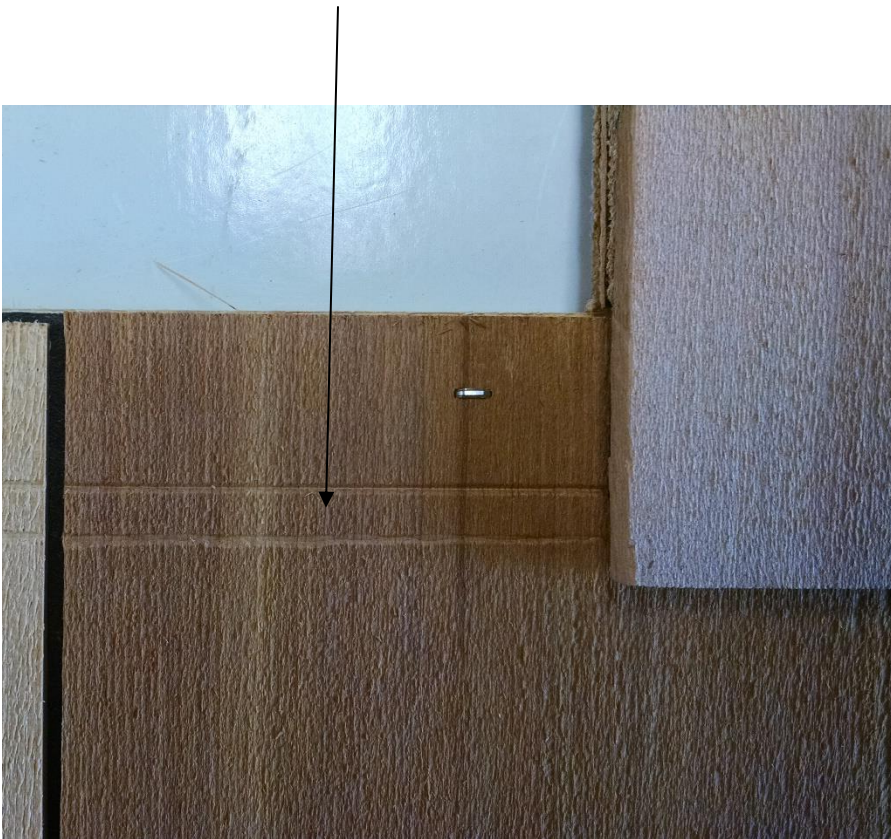
Stackable installation

With the new *Easy Stack* panels, installation just became simpler than ever. The square cut plywood backer makes a one-man installation possible too! Just get the first course level and all other courses follow with minimal adjustment.



Dual Scribe Nail Placement Lines

While our original scribe line was for course alignment, the dual scribe lines on *Easy Stack* panels are for nail placement. When installers drive the fasteners between these lines they are sure to get the highest wind uplift resistance while still concealing them with the next row of panels. With the correct fastener and nailing into studs, a hurricane rating is achieved on all *Easy Stack* panels! (see actual *Nailing Instructions*)



CEDAR VALLEY
Handcrafted Shingle Panels

Technical Questions Or Assistance

For questions on the components of our shingle siding panel please call the factory at 1-800-521-9523 and ask for a technical rep. We're always happy to help!

1-1-2017